

ULTRA-THIN MAGNETIC LIGHT



Ultra-Thin Magnetic Track Channel

1 METER	₹480
2 METERS	₹864
3 METERS	₹1,296



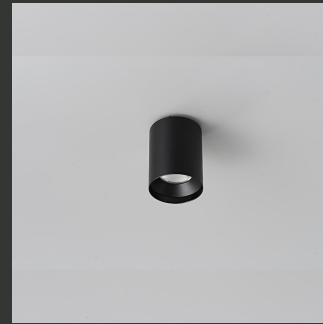
10W Ultra-Thin Magnetic Linear Grill Light

Warm White	₹1,199
Natural White	₹1,199
Cool White	₹1,199



10W Ultra-Thin Magnetic Spot Adjustable Light

Warm White	₹1,899
Natural White	₹1,899
Cool White	₹1,899



7W Ultra-Thin Magnetic Cylinder Light

Warm White	₹1,800
Natural White	₹1,800
Cool White	₹1,800



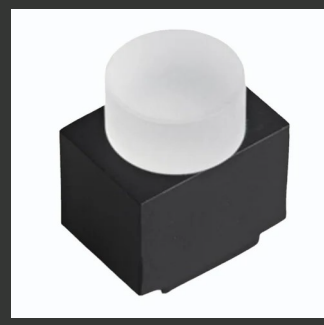
7W Ultra-Thin Magnetic Cylinder Rotatable Light

Warm White	₹1,720
Natural White	₹1,720
Cool White	₹1,720



6W Ultra-Thin Magnetic Single Spot Light

Warm White	₹1,250
Natural White	₹1,250
Cool White	₹1,250



6W Ultra-Thin Magnetic Arc Light

Warm White	₹1,899
Natural White	₹1,899
Cool White	₹1,899



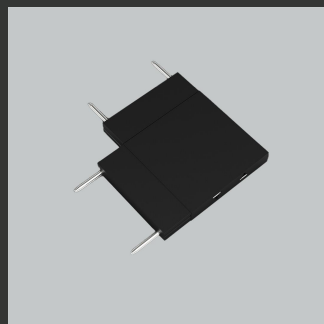
12W Ultra-Thin Magnetic Linear Diffused Light

Warm White	₹910
Natural White	₹910
Cool White	₹910



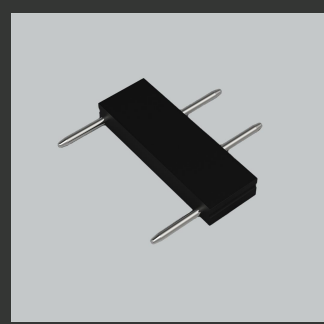
7W Ultra-Thin Magnetic Track Light

Warm White	₹1,530
Natural White	₹1,530
Cool White	₹1,530



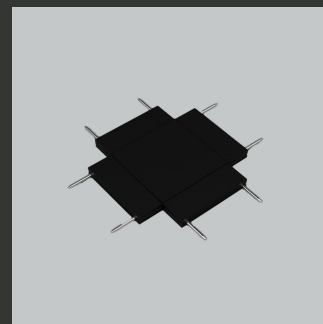
10W ULTRA-THIN MAGNETIC LINEAR GRILL LIGHT

Warm White	₹1,199
Natural White	₹1,199
Cool White	₹1,199



10W ULTRA-THIN MAGNETIC SPOT ADJUSTABLE LIGHT

Warm White	₹1,899
Natural White	₹1,899
Cool White	₹1,899



7W ULTRA-THIN MAGNETIC CYLINDER LIGHT

Warm White	₹1,800
Natural White	₹1,800
Cool White	₹1,800



Ultra-Thin Magnetic Track Channel

1 METER ₹480

2 METERS ₹864

3 METERS ₹1,296



10W Ultra-Thin Magnetic Linear Grill Light

Warm White ₹1,199

Natural White ₹1,199

Cool White ₹1,199

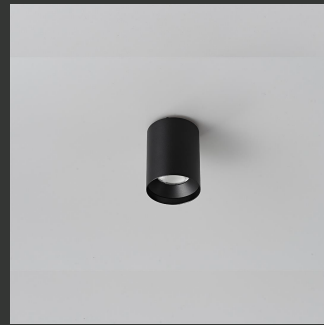


10W Ultra-Thin Magnetic Spot Adjustable Light

Warm White ₹1,899

Natural White ₹1,899

Cool White ₹1,899



7W Ultra-Thin Magnetic Cylinder Light

Warm White ₹1,800

Natural White ₹1,800

Cool White ₹1,800

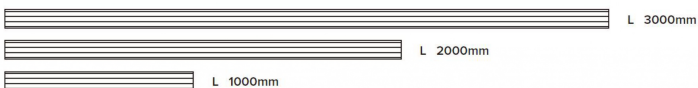
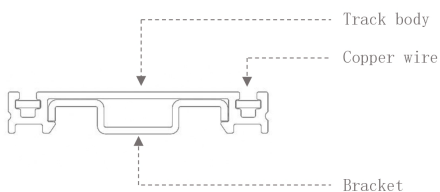
Magnetic Track Channel

Size: 1 Meter, 2 Meters, 3 Meters

Dimensions: 30mm

Color: Black & White

- Length:
- ① 1000mm
- ② 2000mm
- ③ 3000mm



White



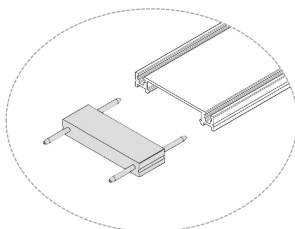
Black

Ultra-thin Joiner

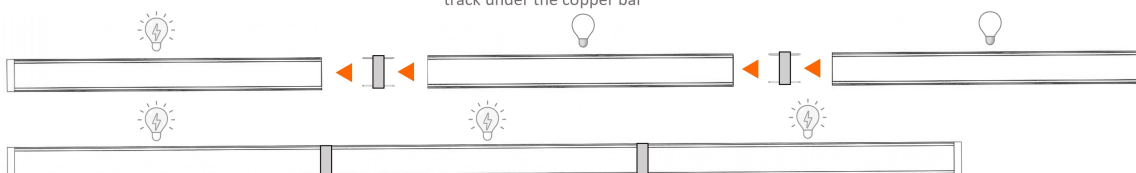
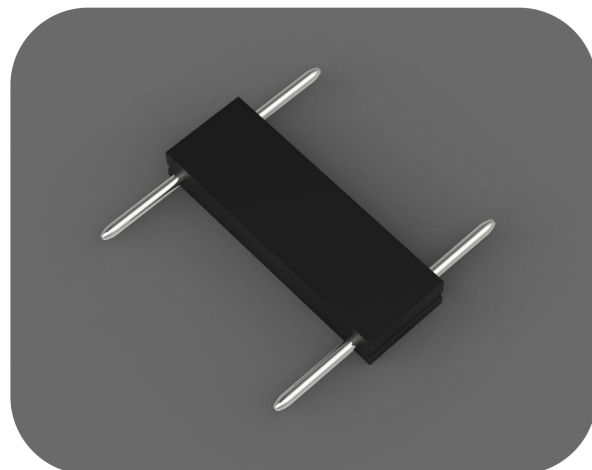
Compatibility: Ultra-Thin Tracks

Dimensions: 30mm

Color: Black



● Insert the copper pin of the module in the track under the copper bar

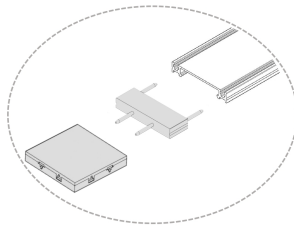


Ultra-thin Jointer

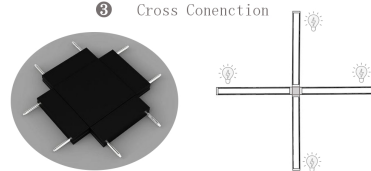
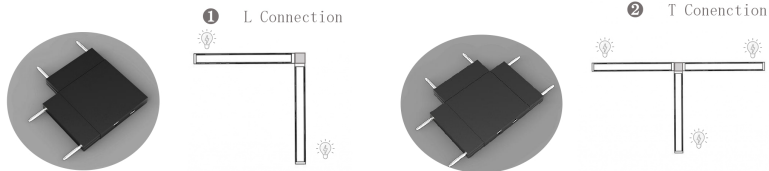
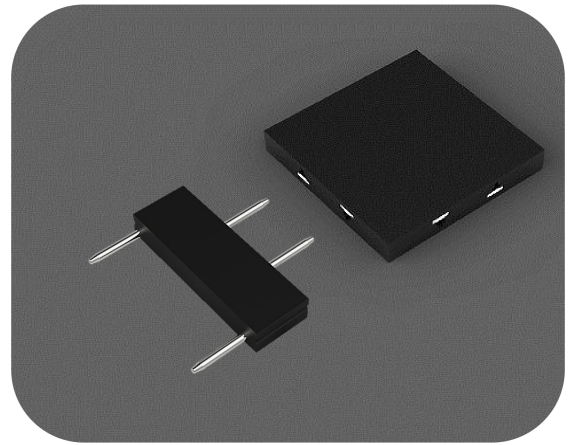
Compatibility: Ultra-Thin Tracks

Dimensions: 30mm

Color: Black



● Insert the copper pin of the module in the track under the copper bar

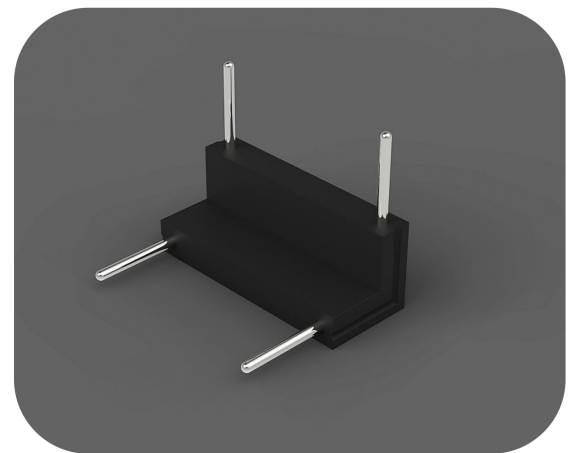
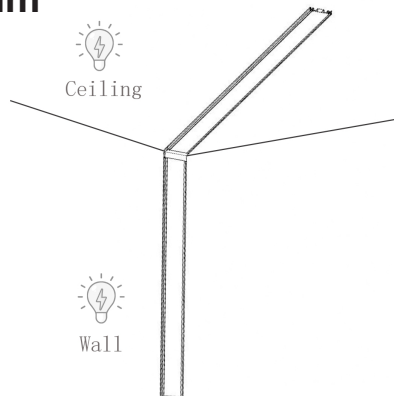


Vertical Jointer

Compatibility: Ultra-Thin Tracks

Dimensions: 30mm

Color: Black

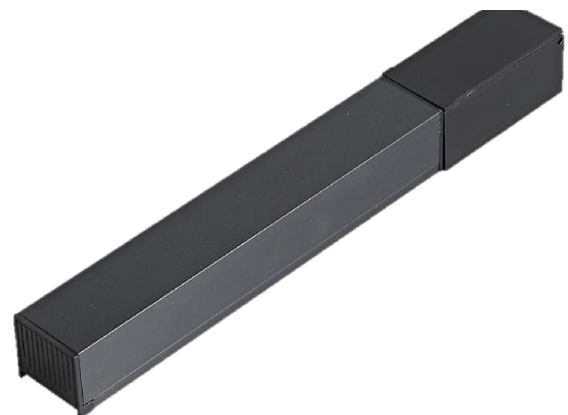
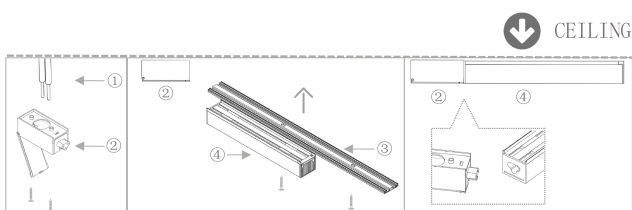


48V 100W Concealed Driver

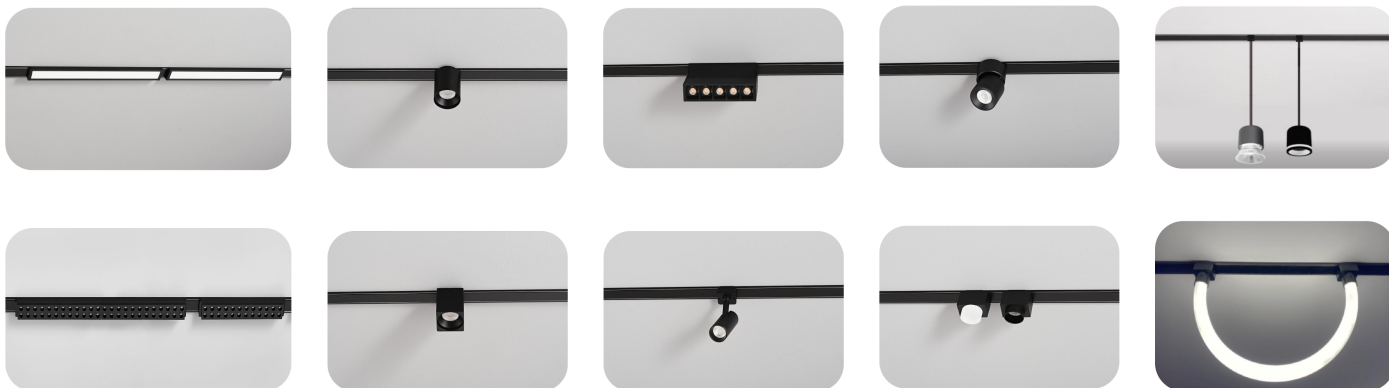
Compatibility: Ultra-Thin Tracks

Dimensions: 30mm

Color: Black

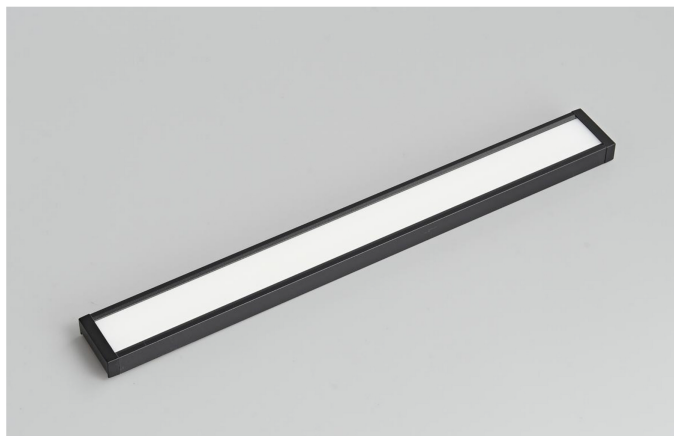
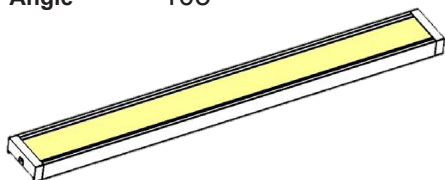


Ultra-thin Magnetic Track System



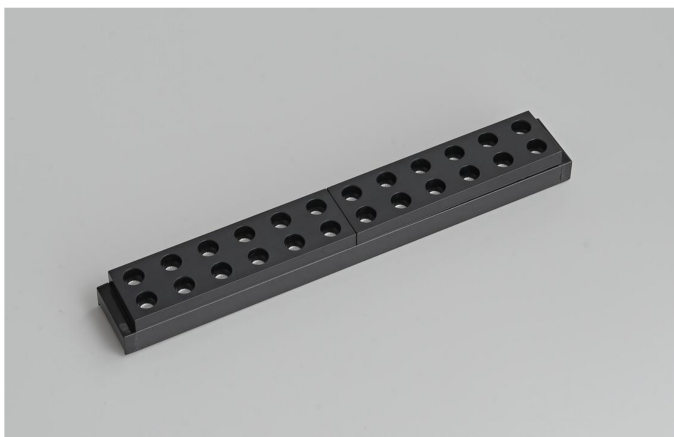
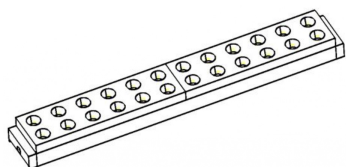
12W Magnetic Linear Diffused

Model No	SD305-DF12
Power	12W
Input volt	48V
Outer Size (mm)	L300 x W32 x H11
Material	Aluminum
CCT	2700-6500
Beam Angle	105



10W Magnetic Linear Grill

Model No	SD305-LG10
Power	10W
Input Volt	48V
Outer Size (mm)	L240 x W32 x H11
Material	Aluminum
CCT	2700-6500
Beam Angle	30



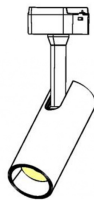
7W Magnetic Cylinder

Model No	SD305-CD07
Power	7W
Input volt	48V
Outer Size (mm)	D54 x H75
Material	Aluminum
CCT	2700-6500
Beam Angle	24



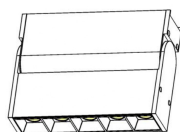
7W Magnetic Track Light

Model No	SD305-TL07
Power	7W
Input volt	48V
Outer Size (mm)	D54 x H75
Material	Aluminum
CCT	2700-6500
Beam Angle	24



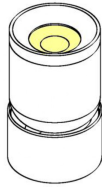
10W Magnetic Spot Adjustable

Model No	SD305-LSA10
Power	10W
Input Volt	48V
Outer Size (mm)	L140 x W30 x H105
Material	Aluminum
CCT	2700-6500
Beam Angle	30



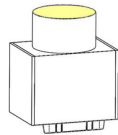
7W Magnetic Cylinder Rotatable

Model No	SD305-CD07R
Power	7W
Input Volt	48V
Outer Size (mm)	D54 x H98
Material	Aluminum
CCT	2700-6500
Beam Angle	24



6W Magnetic Single Spot

Model No	SD305-SP06
Power	6W
Input Volt	48V
Outer Size (mm)	L48 x W35 x H60
Material	Aluminum
CCT	2700-6500
Beam Angle	30



6W Magnetic ARC Light

Model No	SD305-ARC06
Power	6W
Input Volt	48V
Outer Size (mm)	L48 x W35 x H60
Material	Aluminum
CCT	2700-6500
Beam Angle	160

